

Product Specifications

UltraPlex HI-4A Fluorescent Multiplex IHC Panel – Human CD8, CD68, Pan-CK, PD-L1

Description: UltraPlex fluorescent multiplex IHC panel to detect human CD8, CD68, Pan-CK and PD-L1
 Cat. No.: HI04A-005
 Application: IHC-P. Multiplex fluorescent IHC staining of human FFPE tissue sections.
 Product Overview: All components required to stain 5 multiplex slides plus a single negative control slide with a simple two step protocol.

1° Antibody	Clone	1° Tag	2° Antibody	2° Fluor	Absorbance (nm)	Emission (nm)	Filter Set Examples	ExCoeff (M-1cm-1)
CD8	EPR10640 (2)	UT015	Anti-UT015	CL-490	491	515	FITC/GFP	73,000
PD-L1	73-10	UT014	Anti-UT014	CL-550	550	575	Rhodamine/TRITC/Cy3	150,000
Pan-CK	AE1/AE3	UT016	Anti-UT016	CL-650	655	676	Cy5	250,000
CD68	C68/684	UT019	Anti-UT019	CL-750	759	780	Cy7	240,000

Optimized for use on FFPE tissue sections.
 Suitable for conventional imaging using defined filter sets.
 Additional negative control (secondary reagents alone) are available, see NEG01A
 Depending on your imaging scanner or microscope you may want to use Product HI04B with 490, 550, 594 and 650nm fluors instead.

Components: Vial 1: Antibody Diluent Solution
 PBS, 1% BSA, 0.2% Tween 20, 15mM sodium azide
 Vial 2: Protein Block Solution
 PBS, 3% normal rabbit serum, 0.1% TritonX, 15mM sodium azide
 Vials 3-6: Primary Antibody-Tag
 Each 10ul at 0.5ug/ul in PBS, 15mM sodium azide, suggested dilution 1/100
 Vials 7-10: Secondary Antibody-Fluor
 Each 12ul at 0.5ug/ul in PBS, 15mM sodium azide, suggested dilution 1/100

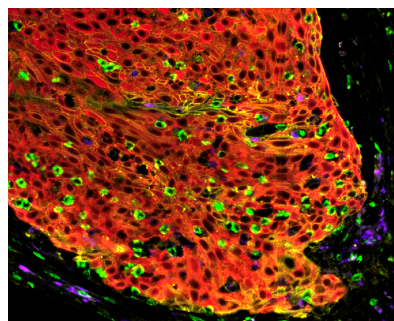
Storage: 2-8°C

Shelf-Life: 6 months

Protocols: Download and use the following suggested protocols:

	Manual	Bond Rx
Antigen Retrieval	LINK	LINK
Staining	LINK	LINK

Notes:



Bladder Transitional Cell Carcinoma biopsy stained manually with HI-4A UltraPlex panel: CD8 (green), CD68 (purple), Pan-CK (red), PD-L1 (yellow). 15X magnification.

Suggested Mounting Medium: Fluoroshield plus DAPI, ImmunoBioScience
 DO NOT USE: Vectashield Mounting Reagent, Vector Labs

Disclaimer: *For In vitro Research Use Only. Not for diagnostic or therapeutic use. Suggested applications of our products are not recommendations to use our products in violation of any patent or as a license under any patent of Cell IDx, Inc. Product may not be resold or modified for resale without prior written approval of Cell IDx, Inc.*

Version 2.3 Revision date 5.12.21